

# 3/2-WAY SOLENOID VALVE

## TYPE 92S



O<sub>2</sub> oxygene applications



### DESCRIPTION

Valve type 92S is a compact 3/2-way direct acting normally open solenoid valve for general applications with gases and liquids for low to medium pressures. Pressure inlet and outlet are in the valve body.

### CONSTRUCTION

Body material	stainless steel
Internal parts	stainless steel
Sealing material	NBR, EPDM, FPM
Voltages	24 V DC, 24 V 50Hz, 230 V 50Hz
Connections	G1/8

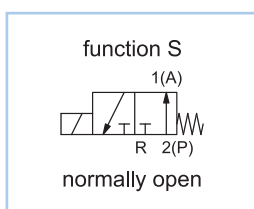
### ON REQUEST

Valve for oxygene applications  
 Non-standard coil voltages  
 Higher ambient temperature range  
 Non-standard equipment

### SWITCHING PRESSURE

Orifice in mm	Normally closed in bar
1,0	12,0
1,2	7,5
1,5	6,0
2,0	3,0
2,5	2,5
See details on the website	

### VARIANTS



## DETAILED INFORMATION

General	
type of construction	3/2-way poppet valve, normally open NO, coil 360° rotatable
operation	electrically
ports	G1/8
ambient temperature	-20°C to +50°C, higher acceptable ambient temperature range on request
fluid temperature	dependent on sealing material and coil
viscosity	max. 21 mm <sup>2</sup> /s (cst)
material	body: AISI 303 plunger tube: AISI 430 internal parts: stainless steel sealing: see type selection
mounting	installation into fixed piping systems, by use of 2 threads M4 or fixing holes diameter 3,2 mm on the bottom side
installation	in any position, preferable vertically fixed solenoid coil
unit of supply	without connector

Electrical	
voltage	DC voltage or AC voltage
standard voltages	24 V DC, 24 V 50Hz, 230 V 50Hz
non-standard voltage on request	6 V - 200 V DC, 12 V - 240 V 50Hz or 60Hz
acceptable voltage tolerance	±10%
power consumption	see specifications at solenoid coils
coil temperature classification	temperature class F (155°C), winding class H (180°C)
duty cycle	100%, continuous operation
protection class	IP65 according DIN EN 60529 (DIN 40050) with correctly mounted connector

Pneumatic – Hydraulic	
fluid	all liquids and gases, non-aggressive to the used material
max. valve body pressure	PN 40
response time	12 - 20 ms
non-standard equipment on request	coil type with cable, coils for temperature class H (180°C), higher differential pressure, other sealing materials

## CONFIGURATION & PRESSURE RANGE

Coil power consumption at 20°C			
coil type	inrush power 50Hz in VA	rated power 50Hz in VA	power DC in W
C1DA	9	5	3

# 3/2-WAY SOLENOID VALVE

## TYPE 92S



$O_2$  oxygene applications

### NORMALLY CLOSED VALVES

Type 92S, 3/2-way solenoid valve, normally closed, pressure at port 2 (P)													
type (order-no.)	NW DN in mm	ports	maximum differential pressure in bar										
			coil C1DA				coil C2DA				coil C3AA		
			fluid compr. air		fluid water		fluid compr. air		fluid water		fluid compr. air		
			50Hz	DC	50Hz	DC	50Hz	DC	50Hz	DC	50Hz	DC	
92S-1.1010AY-A	1,0	G1/8	12,0	12,0	5,0	5,0	12,0	12,0	5,0	5,0	12,0	12,0	
92S-1.1212AY-A	1,2	G1/8	7,5	7,5	4,0	4,0	7,5	7,5	4,0	4,0	7,5	7,5	
92S-1.1515AY-A	1,5	G1/8	5,0	5,0	6,0	6,0	5,0	5,0	6,0	6,0	5,0	5,0	
92S-1.2018AY-A	2,0	G1/8	3,0	3,0	3,0	3,0	3,0	3,0	3,0	3,0	3,0	3,0	
92S-1.2518AY-A	2,5	G1/8	1,2	1,2	2,5	2,5	1,2	1,2	2,5	2,5	1,2	1,2	

### ORDER CODE

Type 92S														
order code	92	S	-	1	B	15	12	A	Y	-	A	C1DA	02400	
Code decoding														
type	type 92S, direct operated, body and plunger tube: stainless steel													
function	S = normally open, pressure relief via plunger tube													
ports	1 = G1/8													
seal material	B = NBR (Perbunan), E = EPDM, V = FPM													
nominal size seat	12 = 1,2 mm, 15 = 1,5 mm, 20 = 2,0 mm, 25 = 2,5 mm													
nominal size pole	12 = 1,2 mm, 15 = 1,5 mm, 18 = 1,8 mm													
external plunger spring	A													
internal plunger spring	Y													
short circuit ring	A = copper short circuit ring, X = without short circuit ring													
coil type	see specifications of the particular coil													
supply voltage	always 5-digits, see code for standard voltage													

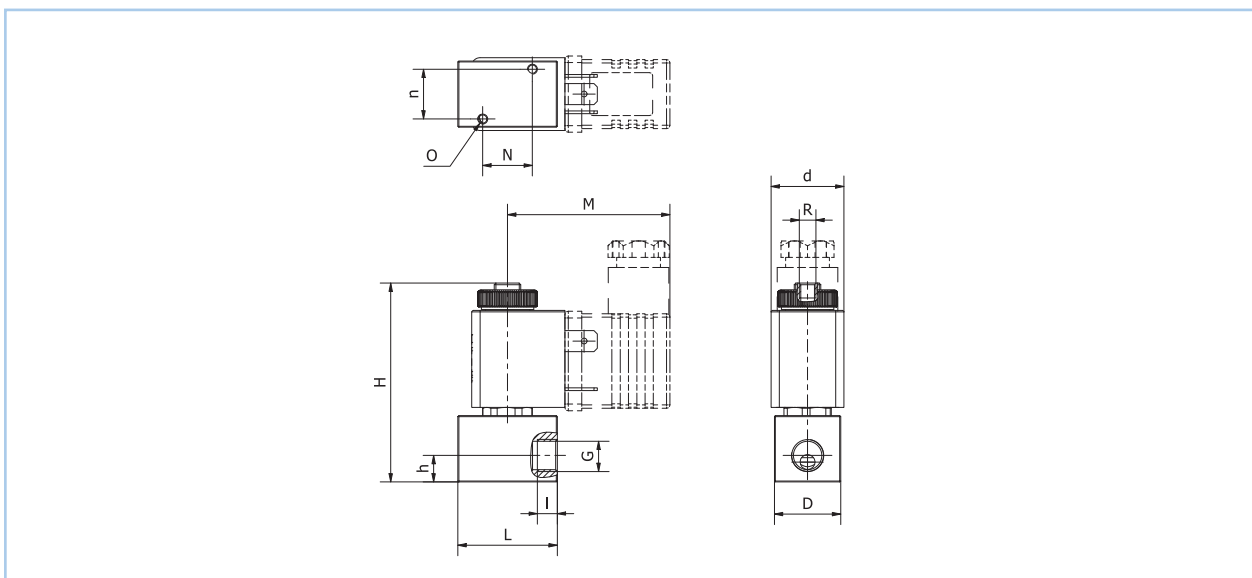
## CONFIGURATION & PRESSURE RANGE

Sealing material	Code	Fluid temperature	Applicable for
NBR (Perbunan)	B	-10°C to 80°C	neutral gases and liquids
EPDM	E	-10°C to 130°C	hot water, steam, not for oil and grease
FPM	V	-10°C to 130°C	oil, petrol, oxygen

### Type 92S, 3/2-way solenoid valve, normally closed, pressure at port 2 (P)

maximum differential pressure in bar											kv-value body nozzle in m <sup>3</sup> /h	kv-value pole nozzle in m <sup>3</sup> /h
coil C3AA		coil CWMA				coil CVFA						
fluid water		fluid compr. air		fluid water		fluid compr. air		fluid water				
50Hz	DC	50Hz	DC	50Hz	DC	50Hz	DC	50Hz	DC			
5,0	5,0	12,0	12,0	5,0	5,0	12,0	12,0	5,0	5,0	0,030	0,028	
4,0	4,0	7,5	7,5	4,0	4,0	7,5	7,5	4,0	4,0	0,045	0,040	
6,0	6,0	5,0	5,0	6,0	6,0	5,0	5,0	6,0	6,0	0,082	0,060	
3,0	3,0	3,0	3,0	3,0	3,0	3,0	3,0	3,0	3,0	0,133	0,071	
2,5	2,5	1,2	1,2	2,5	2,5	1,2	1,2	2,5	2,5	0,195	0,071	

## DIMENSIONS



Dimension table for type 92S in mm, approx. weight in g

coil	G	N	n	M	H	h	I	L	O	R	D	d	approx. weight in g
C1DA	G1/8	15	15	48	61	9	6	30	M3	M5	20	22	142
C3AA	G1/8	15	15	52,5	61	9	6	30	M3	M5	20	30	197