

2/2-WAY SOLENOID VALVE

TYPE 72



O₂ oxygene applications



DESCRIPTION

Valve type 72 is a 2/2-way force pilot operated solenoid valve for general applications with gases and liquids for high flow rates. Due to the special diaphragm design, the valve can be used at 0 bar differential pressure.

CONSTRUCTION

Body material	brass
Internal parts	brass and stainless steel
Sealing material	NBR, EPDM, FPM
Voltages	24 V DC, 24 V 50Hz, 230 V 50Hz
Connections	G3/8 - G1/2

ON REQUEST

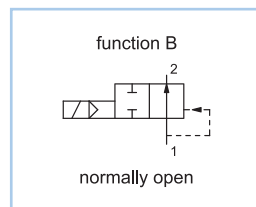
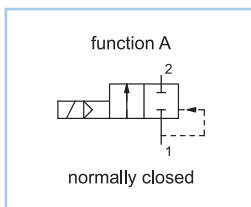
Valve for oxygene applications
 Non-standard coil voltages
 Higher ambient temperature range
 Non-standard equipment
 Manual override

SWITCHING PRESSURE

Ports	Normally closed in bar	Normally open in bar
G3/8	16,0	12,0
G1/2	16,0	12,0

See details on the website

VARIANTS



DETAILED INFORMATION

General	
type of construction	2/2-way poppet valve, with diaphragm, normally closed NC or normally open NO, coil 360° rotatable
operation	electrically, on request: manual override
ports	G3/8 – G1/2
ambient temperature	-20°C to +50°C, higher acceptable ambient temperature range on request
fluid temperature	dependent on sealing material and coil
viscosity	max. 21 mm ² /s (cst)
material	body: brass plunger tube: AISI 303 internal parts: brass and stainless steel sealing: see type selection
mounting	installation into fixed piping system
installation	only with vertical fixed solenoid coil
unit of supply	without connector

Electrical	
voltage	DC voltage or AC voltage
standard voltages	24 V DC, 24 V 50Hz, 230 V 50Hz
non-standard voltage on request	6 V - 200 V DC, 12 V - 240 V 50Hz or 60Hz
acceptable voltage tolerance	±10%
power consumption	see specifications at solenoid coils
coil temperature classification	temperature class F (155°C), winding class H (180°C)
duty cycle	100%, continuous operation
protection class	IP65 according DIN EN 60529 (DIN 40050) with correctly mounted connector

Pneumatic – Hydraulic	
fluid	all liquids and gases, non-aggressive to the used material
max. valve body pressure	PN 16
response time	depending on operating pressure and fluid
non-standard equipment on request	coil type with cable, bright nickel-plated or chemical nickel-plated, coils for temperature class H (180°C)

CONFIGURATION & PRESSURE RANGE

Coil power consumption at 20°C			
coil type	inrush power 50Hz in VA	rated power 50Hz in VA	power DC in W
E4AA	-	-	10
E1AA	32	14	12
E2AA	42	19	17

2/2-WAY SOLENOID VALVE

TYPE 72



O_2 oxygene applications

CONFIGURATION & PRESSURE RANGE

Sealing material	Code	Fluid temperature	Applicable for
NBR (Perbunan)	B	-10°C to 80°C	neutral gases and liquids
EPDM	E	-10°C to 130°C	hot water, steam, not for oil and grease
FPM	V	-10°C to 130°C	oil, petrol, oxygen

NORMALLY CLOSED VALVES

Type 72A, normally closed							
type (order-no.)	NW DN in mm	ports	maximum differential pressure in bar				kv-value in m ³ /h
			coil E1AA		coil E2AA		
			50Hz	DC	50Hz	DC	
72A-3.-A...	10	G3/8	14,0	3,0	16,0	12,0	1,82
72A-4.-A...	10	G1/2	14,0	3,0	16,0	12,0	1,82

NORMALLY OPEN VALVES

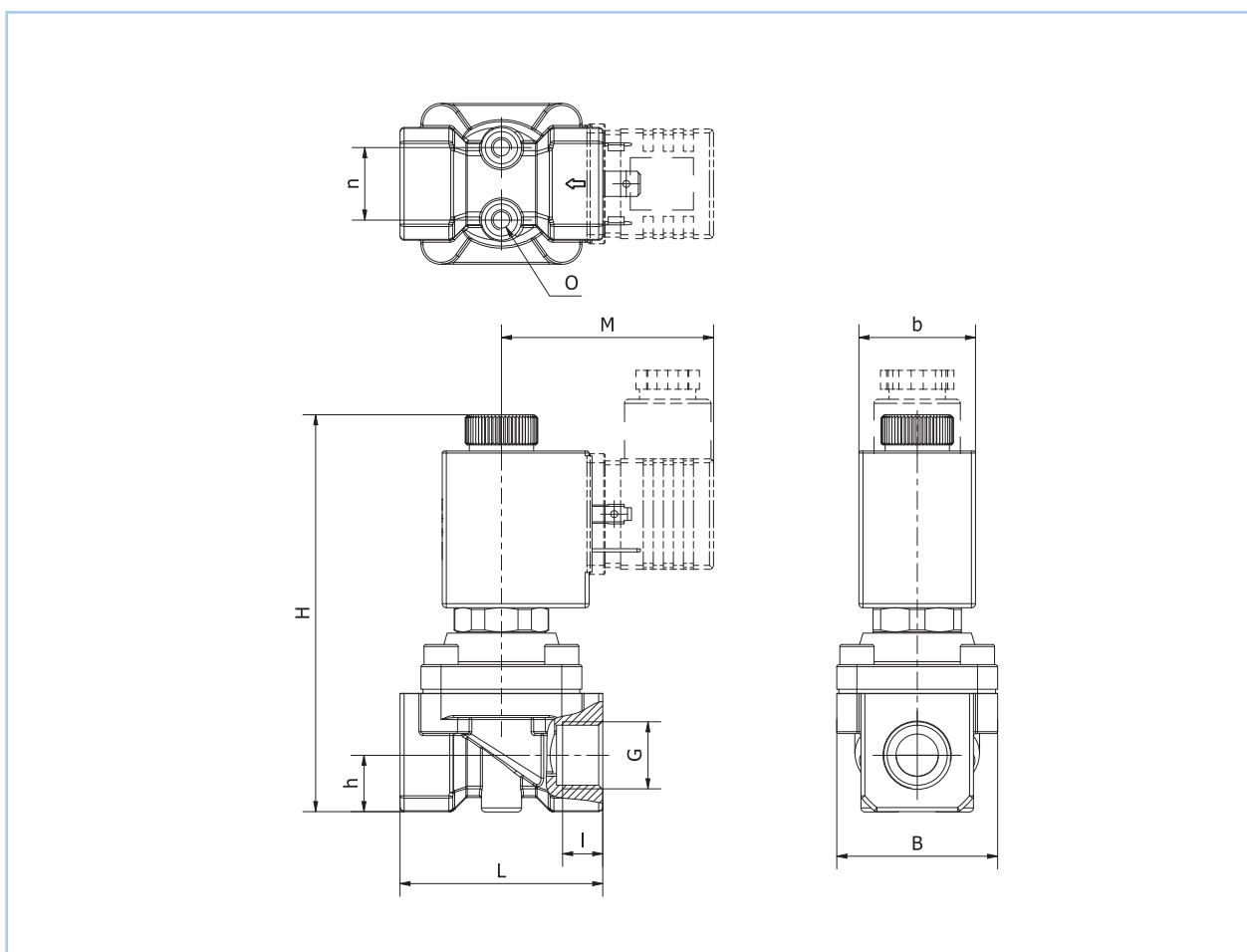
Type 72A, normally open							
type (order-no.)	NW DN in mm	ports	maximum differential pressure in bar				kv-value in m ³ /h
			coil E2AA		coil E3AE		
			50Hz	DC	50Hz	DC	
72B-3.-A...	10,0	G3/8	12,0	12,0	12,0	12,0	1,82
72B-4.-A...	10,0	G1/2	12,0	12,0	12,0	12,0	1,82

ORDER CODE

Type 72A, normally closed										
order code	72	A	-	3	B	-	A	E1AA	02400	
Type 72B, normally open										
order code	72	B	-	3	B	-	A	E4AA	02400	

Code decoding	
type	type 72, force pilot operated, body: brass, plunger tube: stainless steel
function	A = normally closed, B = normally open
ports	3 = G3/8, 4 = G1/2
seal material	B = NBR (Perbunan), E = EPDM, V = FPM
short circuit ring	A = copper short circuit ring, X = without short circuit ring
coil type	see specifications of the particular coil
supply voltage	always 5-digits, see code for standard voltage

DIMENSIONS



Dimension table for type 72 in mm, approx. weight in g

coil	G	type 72A		type 72B		M	b	L	I	B	n	O	approx. weight in g	
		H	h	H	h								72A	72B
E1	G3/8	99	14	99	14	52,5	30	50,5	10	40	18	M5	527	527
E2	G3/8	99	14	99	14	54	36	50,5	10	40	18	M5	569	569
E1	G1/2	98,5	14	98,5	14	52,5	30	50,5	10	40	18	M5	535	535
E2	G1/2	98,5	14	98,5	14	54	36	50,5	10	40	18	M5	577	577