

2/2-WAY SOLENOID VALVE

TYPE 63



O₂ oxygene applications



DESCRIPTION

Valve type 63 is a 2/2-way pilot operated piston solenoid valve for high pressure applications with gases and liquids. A minimum pressure differential is required for operation. The main sealing is out of PTFE.

CONSTRUCTION

Body material	stainless steel
Internal parts	stainless steel
Sealing	PTFE + FPM, optional PTFE + EPDM installation into fixed piping system
Voltages	24 V DC, 24 V 50Hz, 230 V 50Hz
Connections	G1/2 - G2

ON REQUEST

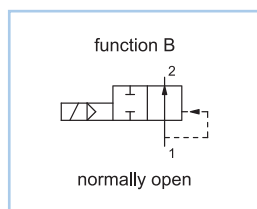
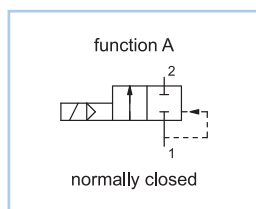
Valve for oxygene applications
Non-standard coil voltages
Higher ambient temperature range
Non-standard equipment
Manual override

SWITCHING PRESSURE

Ports	Normally closed in bar	Normally open in bar
G1/2	2 - 100	2 - 65
G3/4	2 - 100	2 - 65
G1	2 - 100	2 - 65
G1 1/4	2 - 85	2 - 50
G1 1/2	2 - 80	2 - 50
G2	2 - 80	2 - 50

See details on the website

VARIANTS



DETAILED INFORMATION

General	
type of construction	2/2-way poppet valve, with piston, normally closed NC or normally open NO, coil 360° rotatable
operation	electrically, on request: manual override
ports	G1/2 - G2
ambient temperature	-20°C to +50°C, higher acceptable ambient temperature range on request
fluid temperature	dependent on sealing material and coil
viscosity	max. 21 mm ² /s (cst)
material	body: AISI 304 plunger tube: AISI 303 internal parts: stainless steel sealing: PTFE + FPM optional: PTFE + EPDM
mounting	installation into fixed piping system
installation	in any position, preferable vertically fixed solenoid coil
unit of supply	without connector

Electrical	
voltage	DC voltage or AC voltage
standard voltages	24 V DC, 24 V 50Hz, 230 V 50Hz
non-standard voltage on request	6 V - 200 V DC, 12 V - 240 V 50Hz or 60Hz
acceptable voltage tolerance	±10%
power consumption	see specifications at solenoid coils
coil temperature classification	temperature class F (155°C), winding & coil E3 temperature class H (180°C)
duty cycle	100%, continuous operation
protection class	IP65 according DIN EN 60529 (DIN 40050) with correctly mounted connector

Pneumatic – Hydraulic	
fluid	all liquids and gases, non-aggressive to the used material
max. valve body pressure	G1/2 - G1: PN 100, >G1: PN 80
response time	depending on operating pressure and fluid
non-standard equipment on request	coil type with cable, coils for temperature class H (180°C)

2/2-WAY SOLENOID VALVE

TYPE 63



O_2 oxygene applications

CONFIGURATION & PRESSURE RANGE

Coil power consumption at 20°C			
coil type	inrush power 50Hz in VA	rated power 50Hz in VA	power DC in W
E5AA	-	-	8
E4AA	-	-	10
E1AA	32	14	12
E2AA	42	19	17
E3AE	70	32	27

Sealing material	Code	Fluid temperature	Applicable for
PTFE	T	-10°C to 150°C	acids and alkaline solution, steam

NORMALLY CLOSED VALVES

Type 63A, normally closed													
type (order-no.)	NW DN in mm	ports	maximum differential pressure in bar										kv- value in m³/h
			coil E5AA		coil E4AA		coil E1AA		coil E2AA		E3AE		
			50Hz	DC	50Hz	DC	50Hz	DC	50Hz	DC	50Hz	DC	
63A-4T-AE...	15	G1/2	-	2-25	-	2-35	2-40	2-40	2-100	2-100	2-100	2-100	3,6
63A-5T-AE...	20	G3/4	-	2-25	-	2-35	2-40	2-40	2-100	2-100	2-100	2-100	5,7
63A-6T-AE...	25	G1	-	2-18	-	2-25	2-40	2-30	2-100	2-70	2-100	2-85	8,7
63A-7T-AE...	32	G1 1/4	-	2-18	-	2-25	2-40	2-30	2-80	2-70	2-80	2-85	12,9
63A-8T-AE...	40	G1 1/2	-	2-18	-	2-25	2-40	2-25	2-80	2-65	2-80	2-80	19,2
63A-9T-AE...	50	G2	-	2-18	-	2-25	2-40	2-25	2-80	2-65	2-80	2-80	34,7

NORMALLY OPEN VALVES

Type 63B, normally open					
type (order-no.)	NW DN in mm	ports	maximum differential pressure in bar		kv-value in m ³ /h
			coil E3AE		
			50Hz	DC	
63B-4T-AE...	15	G1/2	2 - 65	2 - 65	3,6
63B-5T-AE...	20	G3/4	2 - 65	2 - 65	5,7
63B-6T-AE...	25	G1	2 - 65	2 - 65	8,7
63B-7T-AE...	32	G1 1/4	2 - 50	2 - 50	12,9
63B-8T-AE...	40	G1 1/2	2 - 50	2 - 50	19,2
63B-9T-AE...	50	G2	2 - 50	2 - 50	34,7

ORDER CODE

Type 63A, normally closed										
order code	63	A	-	4	T	-	A	E3AE	23050	
Type 63B, normally open										
order code	63	B	-	4	T	-	A	E3AE	23050	
Code decoding										
type	type 63, pilot operated, body and plunger tube: stainless steel									
function	A = normally closed, B = normally open									
ports	4 = G1/2, 5 = G3/4, 6 = G1, 7 = G1 1/4, 8 = G1 1/2, 9 = G2									
seal material	T = PTFE									
short circuit ring	A = copper short circuit ring, X = without short circuit ring									
coil type	see specifications of the particular coil									
supply voltage	always 5-digits, see code for standard voltage									

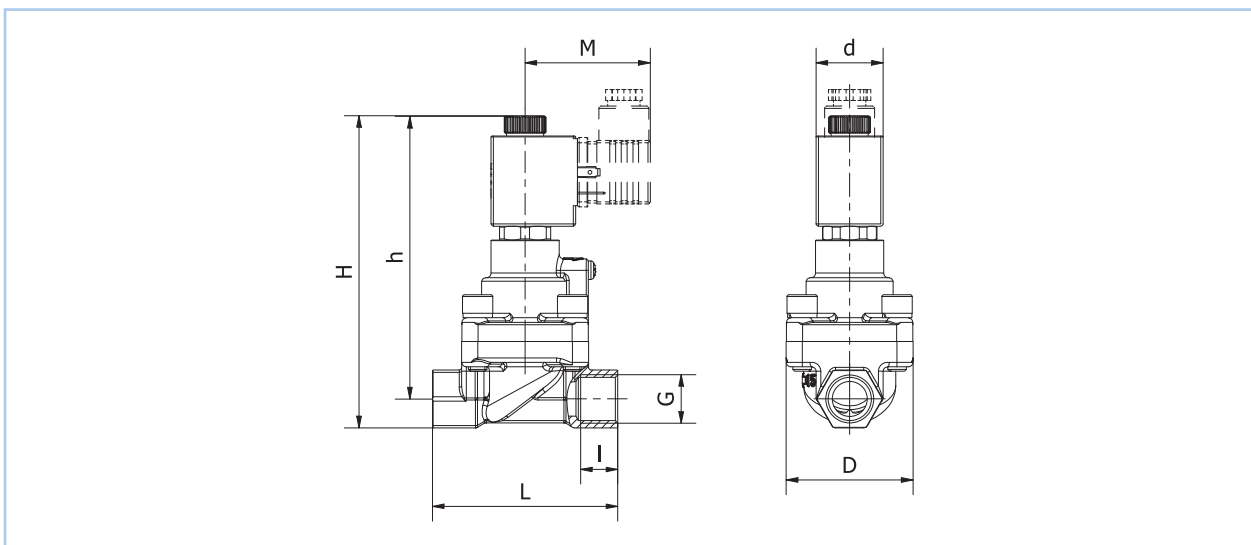
2/2-WAY SOLENOID VALVE

TYPE 63



O_2 oxygene applications

DIMENSIONS



Dimension table for type 63A (normally closed) in mm, approx. weight in g

type	G	M		d		D	h	H	I	L	approx. weight in g
		E1AA	E3AE	E1AA	E3AE						
63A-4T-AE...	G1/2	53	54	30	36	55	124	138	16	80	1 170
63A-5T-AE...	G3/4	53	54	30	36	60	132	150	16	90	1 530
63A-6T-AE...	G1	53	54	30	36	68	137	158	16	100	1 970
63A-7T-AE...	G1 1/4	53	54	30	36	80	142	171	20	130	2 400
63A-8T-AE...	G1 1/2	53	54	30	36	90	153	182	20	130	3 500
63A-9T-AE...	G2	53	54	30	36	108	164	199	20	149	5 100

Dimension table for type 63B (normally open) in mm, approx. weight in g

type	G	M		d		D	h	H	I	L	approx. weight in g
		E1AA	E3AE	E1AA	E3AE						
63B-4T-AE...	G1/2	53	54	30	36	55	130	144	16	80	1 190
63B-5T-AE...	G3/4	53	54	30	36	60	138	156	16	90	1 550
63B-6T-AE...	G1	53	54	30	36	68	143	165	16	100	1 990
63B-7T-AE...	G1 1/4	53	54	30	36	80	148	178	20	130	2 400
63B-8T-AE...	G1 1/2	53	54	30	36	90	159	189	20	130	3 500
63B-9T-AE...	G2	53	54	30	36	108	170	205	20	149	5 100