

2/2-WAY SOLENOID VALVE

TYPE 62



O₂ oxygene applications



DESCRIPTION

Valve type 62 is a 2/2-way pilot operated solenoid valve for general applications with gases and liquids for high flow rates. A minimum pressure differential is required for operation.

CONSTRUCTION

Body material	stainless steel
Internal parts	stainless steel
Sealing material	NBR, EPDM, FPM
Voltages	24 V DC, 24 V 50Hz, 230 V 50Hz
Connections	G1/2 - G2

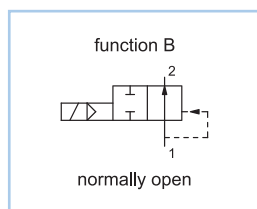
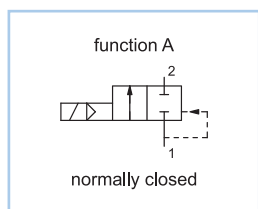
ON REQUEST

Valve for oxygene applications
 Non-standard coil voltages
 Higher ambient temperature range
 Non-standard equipment
 Manual override

SWITCHING PRESSURE

Ports	Normally closed in bar	Normally open in bar
G1/2	0,3 - 16	0,3 - 8
G3/4	0,3 - 16	0,3 - 8
G1	0,3 - 16	0,3 - 8
G1 1/4	0,3 - 12	0,3 - 5
G1 1/2	0,3 - 12	0,3 - 5
G2	0,3 - 12	0,3 - 5
See details on the website		

VARIANTS



DETAILED INFORMATION

General	
type of construction	2/2-way poppet valve, with diaphragm, normally closed NC or normally open NO, coil 360° rotatable
operation	electrically, on request: manual override
ports	G1/2 - G2
ambient temperature	-20°C to +50°C, higher acceptable ambient temperature range on request
fluid temperature	dependent on sealing material and coil
viscosity	max. 21 mm ² /s (cst)
material	body: AISI 304 plunger tube: AISI 303 internal parts: AISI 303 and AISI 304 sealing: see type selection
mounting	installation into fixed piping system
installation	in any position, preferable vertically fixed solenoid coil
unit of supply	without connector

Electrical	
voltage	DC voltage or AC voltage
standard voltages	24 V DC, 24 V 50Hz, 230 V 50Hz
non-standard voltage on request	6 V - 200 V DC, 12V - 240 V 50Hz or 60Hz
acceptable voltage tolerance	±10%
power consumption	see specifications at solenoid coils
coil temperature classification	temperature class F (155°C), winding class H (180°C)
duty cycle	100%, continuous operation
protection class	IP65 according DIN EN 60529 (DIN 40050) with correctly mounted connector

Pneumatic – Hydraulic	
fluid	all liquids and gases, non-aggressive to the used material
max. valve body pressure	G1/2 - G1: PN 20, >G1: PN 16
response time	depending on operating pressure and fluid
non-standard equipment on request	coil type with cable, coils for temperature class H (180°C)

2/2-WAY SOLENOID VALVE

TYPE 62



O₂ oxygene applications

CONFIGURATION & PRESSURE RANGE

Coil power consumption at 20°C			
coil type	inrush power 50Hz in VA	rated power 50Hz in VA	power DC in W
C1DA	9	5	3
C2DA	13	10	6,5
C3AA	17	13	6,3

Sealing material	Code	Fluid temperature	Applicable for
NBR (Perbunan)	B	-10°C to 80°C	neutral gases and liquids
EPDM	E	-10°C to 130°C	hot water, steam, not for oil and grease
FPM	V	-10°C to 130°C	oil, petrol, oxygen

NORMALLY CLOSED VALVES

Type 62A, normally closed									
type (order-no.)	NW DN in mm	ports	maximum differential pressure in bar						kv-value in m ³ /h
			coil C1DA		coil C2DA		coil C3AA		
			50Hz	DC	50Hz	DC	50Hz	DC	
62A-4.-AC...	13	G1/2	0,3 - 16	0,3 - 3	0,3 - 16	0,3 - 10	0,3 - 16	0,3 - 16	3,0
62A-5.-AC...	18	G3/4	0,3 - 16	0,3 - 3	0,3 - 16	0,3 - 10	0,3 - 16	0,3 - 16	5,7
62A-6.-AC...	24	G1	0,3 - 16	0,3 - 3	0,3 - 16	0,3 - 10	0,3 - 16	0,3 - 16	9,0
62A-7.-AE...	30	G1 1/4	0,3 - 9	0,3 - 2	0,3 - 12	0,3 - 6,5	0,3 - 12	0,3 - 12	17,4
62A-8.-AE...	38	G1 1/2	0,3 - 9	0,3 - 2	0,3 - 12	0,3 - 6,5	0,3 - 12	0,3 - 12	25,2
62A-9.-AE...	50	G2	0,3 - 9	0,3 - 2	0,3 - 12	0,3 - 6,5	0,3 - 12	0,3 - 12	45,6

NORMALLY OPEN VALVES

Type 62B, normally open							
type (order-no.)	NW DN in mm	ports	maximum differential pressure in bar				kv-value in m ³ /h
			coil C2DA		coil C3AA		
			50Hz	DC	50Hz	DC	
62B-4.C-AC...	13	G1/2	0,3 - 7	0,3 - 7	0,3 - 7	0,3 - 7	3,0
62B-5.C-AC...	18	G3/4	0,3 - 7	0,3 - 7	0,3 - 7	0,3 - 7	5,7
62B-6.C-AC...	24	G1	0,3 - 7	0,3 - 7	0,3 - 7	0,3 - 7	9,0
62B-7.C-AC...	30	G1 1/4	0,3 - 4	0,3 - 4	0,3 - 4	0,3 - 4	17,4
62B-8.C-AC...	38	G1 1/2	0,3 - 4	0,3 - 4	0,3 - 4	0,3 - 4	25,2
62B-9.C-AC...	50	G2	0,3 - 4	0,3 - 4	0,3 - 4	0,3 - 4	45,6
62B-4.F-AC...	13	G1/2	0,3 - 8	-	0,3 - 8	0,3 - 8	3,0
62B-5.F-AC...	18	G3/4	0,3 - 8	-	0,3 - 8	0,3 - 8	5,7
62B-6.F-AC...	24	G1	0,3 - 8	-	0,3 - 8	0,3 - 8	9,0
62B-7.F-AE...	30	G1 1/4	0,3 - 5	-	0,3 - 5	0,3 - 5	17,4
62B-8.F-AE...	38	G1 1/2	0,3 - 5	-	0,3 - 5	0,3 - 5	25,2
62B-9.F-AE...	50	G2	0,3 - 5	-	0,3 - 5	0,3 - 5	45,6

ORDER CODE

Type 62A, normally closed										
order code	62	A	-	9	B	-	A	C3AA	23050	
Type 62B, normally open										
order code	62	B	-	9	B	F	-	A	C3AA	23050
Code decoding										
type	type 62, pilot operated, body and plunger tube: stainless steel									
function	A = normally closed, B = normally open									
ports	4 = G1/2, 5 = G3/4, 6 = G1, 7 = G1 1/4, 8 = G1 1/2, 9 = G2									
seal material	B = NBR (Perbunan), E = EPDM, V = FPM									
throw off spring	only for type 62B									
short circuit ring	A = copper short circuit ring, X = without short circuit ring									
coil type	see specifications of the particular coil									
supply voltage	always 5-digits, see code for standard voltage									

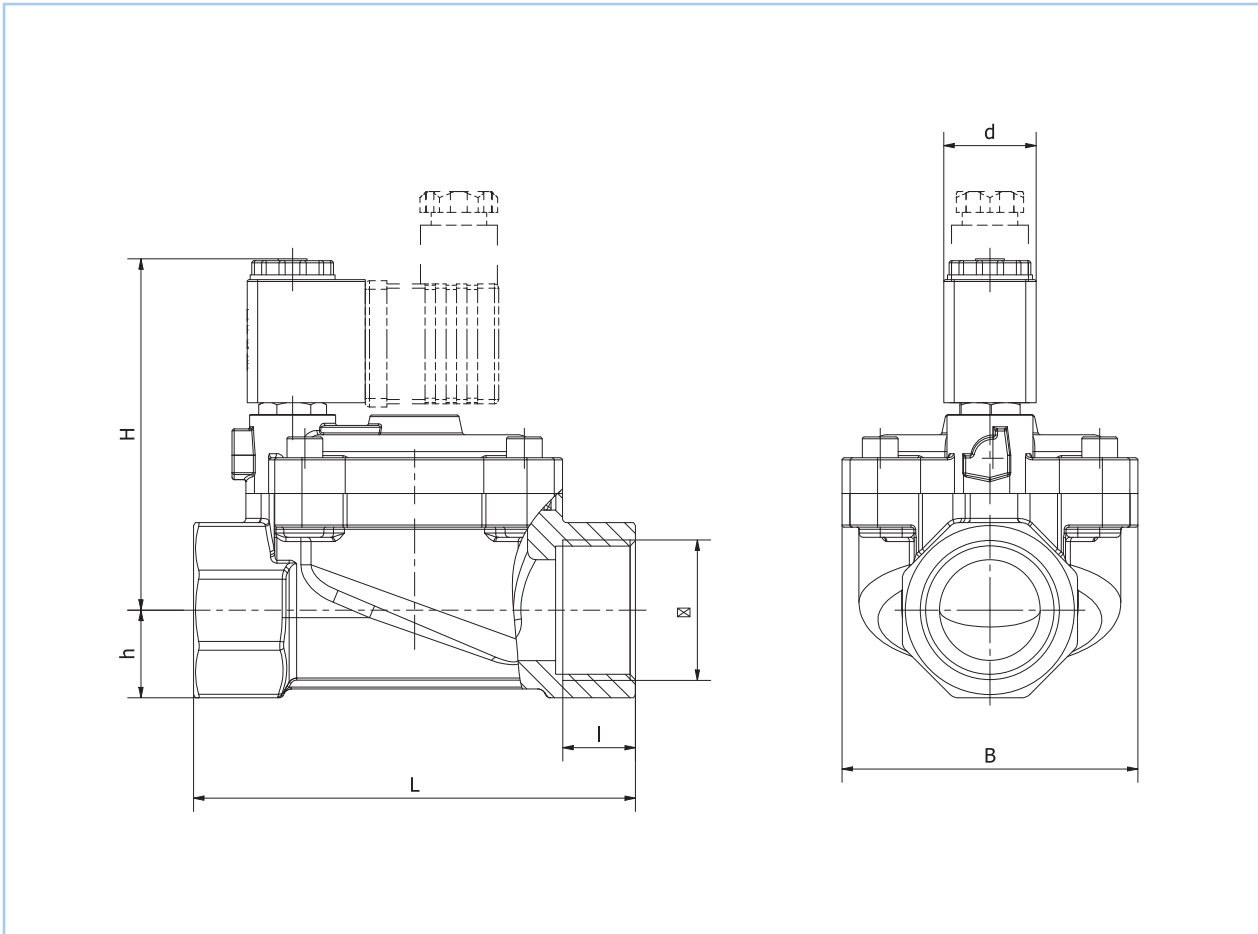
2/2-WAY SOLENOID VALVE

TYPE 62



O_2 oxygene applications

DIMENSIONS



Dimension table for type 62 in mm, approx. weight in g

type	G	B	d		h	H	l	L	approx. weight in g
			C2	C3					
62.-4.-AC...	G1/2	42	22	30	13,5	73	14	66	400
62.-5.-AC...	G3/4	51	22	30	17	75,5	16	79	550
62.-6.-AC...	G1	71	22	30	21	84	17	105	1 110
62.-7.-AC...	G1 1/4	85	22	30	25	92	20	130	1 580
62.-8.-AC...	G1 1/2	97	22	30	29	98	20	146	2 220
62.-9.-AC...	G2	125	22	30	36	107	23	174	3 750